



## The surveillance programme for Schmallenberg virus (SBV) in Norway 2020



REPORT 48/2021

## The surveillance programme for Schmallenberg virus (SBV) in Norway 2020

### Authors

Thea Blystad Klem, Johan Åkerstedt, Siv Klevar

### Suggested citation

Kem, Thea Blystad, Åkerstedt, Johan, Klevar, Siv. The surveillance programme for Schmallenberg virus (SBV) in Norway 2020. Surveillance program report. Veterinærinstituttet 2021. © Norwegian Veterinary Institute, copy permitted with citation

### Quality controlled by

Merete Hofshagen, Director of Animal Health, Animal Welfare and Food Safety, Norwegian Veterinary Institute

### Published

2021 on [www.vetinst.no](http://www.vetinst.no)  
ISSN 1890-3290 (electronic edition)  
© Norwegian Veterinary Institute 2021

### Commissioned by

Norwegian Food Safety Authority



### Colophon

Cover design: Reine Linjer  
Cover photo: Colourbox  
[www.vetinst.no](http://www.vetinst.no)

# Content

Summary .....	3
Introduction .....	3
Aim .....	4
Materials and methods .....	4
Results .....	5
Discussion .....	6
References.....	7

## Summary

A moderate number of herds in two counties in southern Norway were positive for antibodies against Schmallenberg virus (SBV) in bulk milk samples in 2020. The prevalence of antibodies in the tested Norwegian herds has declined gradually after the epidemic in 2012.

## Introduction

Schmallenberg virus (SBV) is an arthropod born virus in the genus Orthobunyavirus and is a member of Simbu serogroup viruses. Midges (*Culicoides* spp.) act as vectors. Vertical transmission occurs through placenta. The virus causes subclinical infection or mild non-specific clinical signs in cattle and sheep during the vector season. In pregnant cattle, sheep, goats and bison, SBV causes stillbirth and congenital malformations. Disease caused by Schmallenberg virus is not notifiable in Norway.

Orthobunyavirus of the Simbu serogroup was not detected in Europe before 2011. Schmallenberg virus was first identified in Germany and the Netherlands from dairy cattle diseased in summer and autumn of 2011. Soon after, presence of SBV was confirmed in newborn lambs with congenital malformations. From Germany and the Netherlands SBV rapidly spread to many European countries (1).

In Norway, Schmallenberg virus was detected in midges in September 2012. Two months later, a high proportion (17.3%) of dairy herds in the southern part of the country were seropositive for SBV. Retrospective analysis of some of these herds showed that they had seroconverted in the previous summer months (2). In the following winter, a calf was born with malformations due to Schmallenberg virus infection (3).

After the SBV epidemic in 2012, bulk milk analyses revealed no infected dairy farm further north along the west coast of Norway. A total of 60 samples of midges collected at five locations in southern Norway in 2013 were negative for SBV (2). No clinical case of Schmallenberg disease, or deformations in newborn ruminants due to SBV, was recorded.

Surveillance in 2016 and 2018 showed that the prevalence of bulk milk positive herds had declined. However, abortions in seropositive cows, and positive bulk milk samples from previously negative farms, indicated that the virus could have circulated in Norway after the epidemic in 2012 (4).

The Norwegian Food Safety Authority was responsible for implementing the surveillance programme for SBV. The Norwegian Veterinary Institute was in charge of designing the programme, collecting the bulk milk samples from the dairies and performing the tests. Blood samples from cattle herds were collected by inspectors from the Norwegian Food Safety Authority.

## Aim

The aim of the surveillance and control programme for SBV in 2020 is to document if SBV has circulated or re-emerged in Norway, and to estimate the proportion of seropositive dairy herds, after the epidemic in 2012.

## Materials and methods

The target population of surveillance consisted of dairy herds delivering milk to dairies during the sampling period in December, after the end of the vector season. Bulk milk samples were collected from 486 dairy herds in southern Norway. The number of herds per county and the number of herds selected in the surveillance programme for Schmallenberg virus (SBV) in 2020 are given in Table 1.

Additionally, blood samples from cows having an abort between 5th and 9th Month of pregnancy were collected after approximately a month in farms having at least two such abortions within a year (Table 2). These samples came from both beef cattle and dairy farms all over Norway.

The bulk milk samples were analysed with an Indirect ELISA (ID Screen® Schmallenberg virus Milk Indirect, IDvet, Grabels, France) for detection of antibodies against SBV. Blood samples from cows with abortions were analysed in duplicates with another indirect ELISA (ID Screen® Schmallenberg virus Indirect Multi-species, IDvet).

**Table 1:** Numbers of dairy herds, numbers of dairy herds sampled and number of positive herds in the surveillance programme for Schmallenberg virus (SBV) in Norway in 2020.

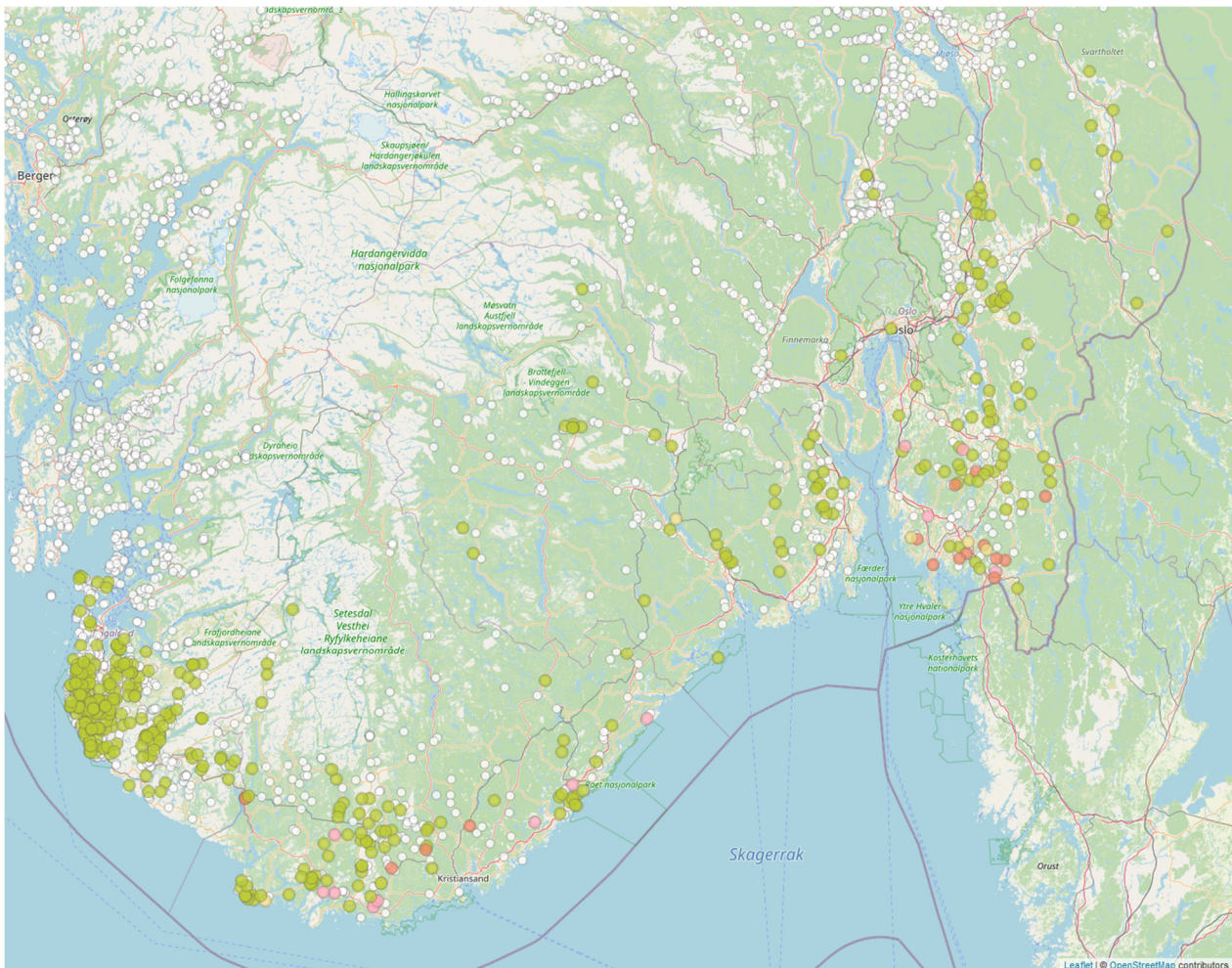
County	Dairy herds (Total no.*)	Dairy herds sampled (No.)	Positive (No.)	Prevalence (%) [95%CI]
Oslo	2	1	0	0
Viken	393	89	15	16.9 [10.5-26.0]
Innlandet	1 362	15	0	0
Vestfold og Telemark	138	40	0	0
Agder	280	103	13	12.6 [7.5-20.4]
Rogaland	1 094	238	0	0
<b>Total</b>	<b>3 269</b>	<b>486</b>	<b>28</b>	<b>5.8 [4.0-8.2]</b>

## Results

From the 486 sampled dairy herds in 2020, 28 bulk milk samples were positive for antibodies against SBV (5.8%). Positive herds were recorded in the counties of Viken and Agder. In the other counties, all tested herds were negative (Table 1).

Of farms tested in both 2018 and 2020 ( $n = 183$ ), 15 farms that tested negative for antibodies in 2018, had positive bulk milk results by December 2020 (8.2%). Eleven of the dairy farms that seroconverted between 2018 and 2020 are situated in Viken (geographical area of former Østfold county), whereas the other four are situated in Agder (geographical area of former Vest-Agder county, Figure 1).

From the 236 sampled cows with abortions in 2019 and 2020, one sample was positive for antibodies against SBV. Table 2 shows test results for cows with abortions during the period from 2013 to 2020.



**Figure 1:** Schmallenbergvirus antibodies in bulk milk from 486 Norwegian dairy herds tested in 2020. Positive farms with negative results in 2018 are marked with red symbols, whereas other positive farms are pink, and negative farms have green symbols. White dots represent untested dairy farms.

**Table 2:** Number of Norwegian cattle herds and number of cows with abortions tested for Schmallenberg virus (SBV) during the years 2013-2020.

Year	Total number of cattle herds <sup>1</sup>	Number of herds sampled	Number of tested cows with abortion	Number of positive herds
2012	15 057	6	9	0
2013	15 079	68	150	1
2014	14 550	44	102	0
2015	14 210	48	104	3
2016	14 047	62	149	1
2017	13 880	48	125	0
2018	13 646	56	139	0
2019	13 264	31	108	2
2020	12 994	43	128	0
<b>Total</b>		<b>365<sup>2</sup></b>	<b>1 013</b>	<b>6<sup>2</sup></b>

<sup>1</sup> Based on data from the register of production subsidies as of 31<sup>st</sup> of July the respective year until 2017. Thereafter, data from 1<sup>st</sup> of October was used.

<sup>2</sup> Total number of unique herds

## Discussion

The data of this report show that the prevalence of antibody positive dairy farms has declined from 2012. It is now moderate in two counties and no cases were detected in the other included counties of southern Norway (Table 1)

After the spread of SBV by midges, *Culicoides* spp., in the summer season of 2012, SBV had its largest dissemination in central and northern Europe. The surveillance showed that Schmallenberg disease was introduced to southern Norway in 2012 (2). Not all herds were infected in endemic areas, nor were all animals in one herd infected. Bulk milk testing of 2,391 dairy herds in October that year revealed high prevalence of infection in counties along the southern coast of Norway (23.8-75.0%), whereas counties of the interior (Hedmark and Oppland) and west coast (Rogaland and Hordaland) had few infected farms (0.0-1.8%). In 2013, all trapped and tested midges were negative for SBV.

In western Europe there has been continuous circulation of SBV at low levels since 2013 (5). Surveillance performed in Norway in 2016, showed that the prevalence declined in all counties that had a high prevalence in 2012 (4). Prevalence remained high in the counties Aust- and Vest-Agder (18.8% and 23.8%, respectively). Twenty of the positive dairy farms, had converted from negative to positive bulk milk between 2012 and 2016, and eleven of these farms were situated in Vest-Agder. The results of the Norwegian surveillance in 2018 showed high prevalence of positive farms in four counties and the prevalence had increased since 2016.

The results of the Norwegian surveillance program in 2020 showed that the prevalence has declined since 2018, but there are herds in Viken and Agder that have converted from negative to positive for SBV antibodies in bulk milk. Thus, there is circumstantial evidence for recirculation of SBV at a low level in the southern part of Norway.

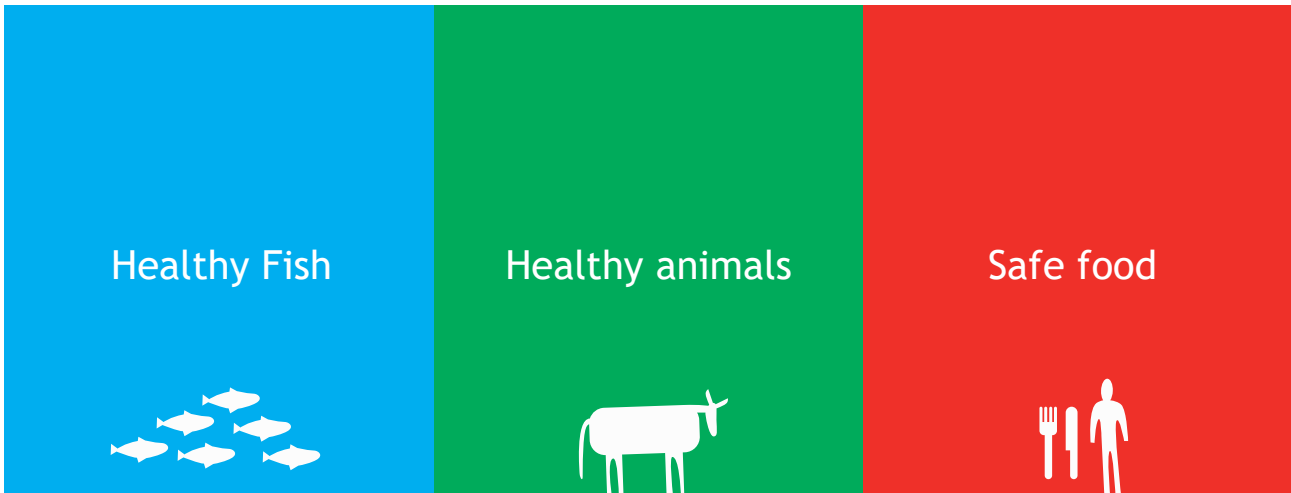
Sources of re-emerging infection can be continuous low level circulation or new introduction of SBV. In the midges-free season, it is possible for the virus to over-winter in midges or in foetuses of pregnant animals (6). New introduction with animal trade is less likely since very few ruminants are imported to Norway. Re-introduction would most likely be airborne transfer of infected midges from neighbouring countries, i.e. Sweden, Denmark or Scotland, to southern Norway from the beginning of May until the end of October. The topography in Norway with hills and valleys makes it difficult for long distance transfer of midges from one local area to another and the relatively low density of domesticated ruminants compared to the rest of Europe makes it less likely for a widespread of the agent.

The most important purpose of the surveillance programme is to reveal potential infections brought in with airborne midges during the vector season. Cattle are efficient sentinel animals for SBV. Most dairy cattle have to be kept outdoors, at least eight weeks during the summer, making their exposure to midges not very different from the exposure of beef cattle or small ruminants to the vector. Testing bulk milk collected from the end of October and onwards, will detect any infection introduced during the previous vector season.

## References

1. OIE Technical Factasheet: Schmallerberg virus, October 2013.
2. Åkerstedt J, Hamnes IS, Sviland S. The surveillance and control programme for Schmallerberg virus (SBV) in Norway 2012-2013. Surveillance and control programmes for terrestrial and aquatic animals in Norway. Annual report 2013. Oslo: Norwegian Veterinary Institute 2015.
3. Wisløff H, Nordvik BS, Sviland S, Tønnesen R. First documented clinical case of Schmallerberg virus in Norway: fetal malformations in a calf. *Veterinary Record* 2014; Feb 1;174(5):120. doi: 10.1136/vr.102149.
4. Åkerstedt J, Sviland S, Er, C. The surveillance programme for Schmallerberg virus (SBV) in Norway 2018. Surveillance programmes for terrestrial and aquatic animals in Norway. Annual report 2018. Oslo: Norwegian Veterinary Institute 2019.
5. Stavrou A, Daly JM, Maddison B, Gough K, Tarlinton R. How is Europe positioned for a re-emergence of Schmallerberg virus? *The Veterinary Journal* 2017: 230, 45-51.
6. European Food Safety Authority (EFSA). Schmallerberg virus: state of art. *EFSA Journal*. 2014;12(5):3681. doi:10.2903/j.efsa.2014.3681. 54 pp.





*Scientifically ambitious, forward-looking  
and collaborative- for one health!*



**Veterinærinstituttet**  
Norwegian Veterinary Institute

Ås

Trondheim

Sandnes

Bergen

Harstad

Tromsø

postmottak@vetinst.no  
www.vetinst.no